

Description

CO₂ High Range Alarm is an Alarmbox for monitoring and alarming at leakage in CO₂-cooled cooling and cold stores.

The alarmbox is set with 2 alarm setpoints, so it will alarm in case of leakage and incipient problematic CO₂ level and another at high CO₂ concentration associated with danger. Furthermore a 12V backup supply can be connected to the alarm box and hereby ensure CO₂ monitoring and alarm in case of main supply outage. The alarmbox is also equipped with 2 potential free relays, which are drawn at to separate setpoints for alarm. You may connect e.g. external alarm lamps, rotating lights or external sounding devices to these relays if required.

We recommend using this alarmbox in combination with our CO₂ Sensor High Range (49125).

For a detailed manual of alarm and complete alarm system with CO₂ sensor, please scan QR-code at the bottom of this product sheet.



Warning

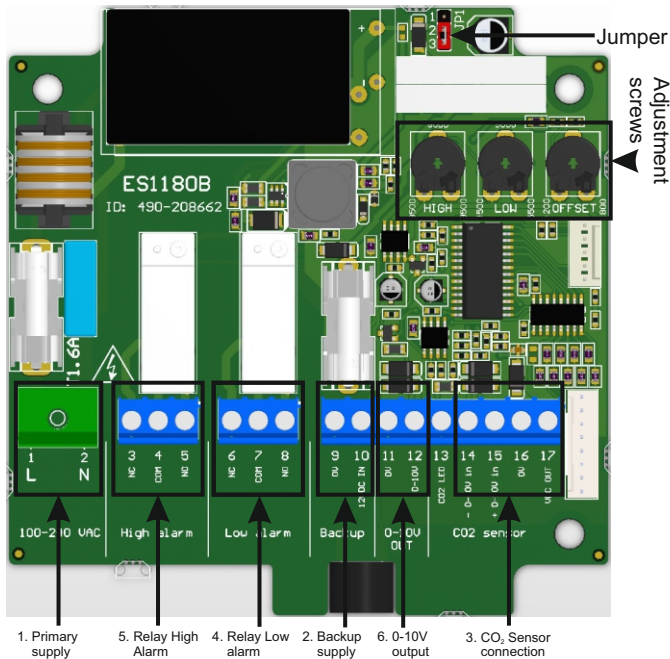
ESD-Sensitive when the lid is removed. Make sure to be ESD discharged before installation.

Contact hazard. Beware of live parts (230V AC) in the device during installation and setting

Mounting

Must be mounted on a non-vibrating surface in a non-condensing environment. Do not place in direct sunlight. Note CO₂ High Range Alarm is IP 53.

Terminal Connections



Connection Description

1. Primary supply. Phase conductor (L), Neutral conductor (N)
2. Backup supply 0V (GND) 12VDC IN (11-15V DC)
3. Connection to CO₂ Sensor. -0-10V in (minus conductor), +0-10V in (positive conductor), 0V (GND), VDC OUT (12/13V DC out)
4. Potential free Relay draws at alarm LOW
5. Potential free Relay draws at alarm HIGH
6. 0-10V output. 0V (GND) 0-10V (positive conductor; 0V=0ppm, 10V=10.000ppm).

Jumper

Pos. 1-2: OFF. CO₂ sensor is not supplied by backup supply in case of failure on primary supply.
Pos. 2-3: ON. CO₂ sensor is supplied by backup supply in case of failure on primary supply.
Manufacturer setting is ON (pos. 2-3)

Adjustment Screws

On the PCB you find 3 adjustment screws.

HIGH: Setting the CO₂ ppm setpoint for triggering high alarm. Setpoint may be set between 8500 and 9500ppm.

LOW: Setting of the CO₂ ppm setpoint for triggering low alarm. Setpoint may be set between 4500 and 5500ppm.

OFFSET: Possibility to adjust the calibration CO₂ to take an unusual high or low CO₂ concentration for room into account when automatic calibration of CO₂ sensor is performed.

Alarm Overview

Supply/ Alarm mode	Alarm light	RunLED	Sound	Low Alarm	High Alarm
Primary supply OK, No CO ₂ sensor connected	Failure	On	Off	NC	NC
Primary supply OK Setpoint LOW exceeded	Alarm	On	Off	NO	NC
Primary supply OK Setpoint HIGH exceeded	Alarm	On	On mute No	NO	NO
Primary supply not OK Backup supply for CO ₂ OFF	Failure	Off	On Mute Yes	NO	NO
Primary supply not OK Backup supply for CO ₂ ON Setpoint LOW exceeded	Alarm	Off	Off	NO	NC
Primary supply not OK Backup supply for CO ₂ ON Setpoint HIGH exceeded	Alarm	Off	On mute No	NO	NO

Technical Specifications

Primary Supply: 100 - 240V AC 50-60Hz
Backup Supply: 12V DC min 500mA
Enclosure: IP53
Dimensions (HxWxD): 120x122x55mm
Humidity: 0-80%RH non-condensating
Operating Temperature: 0°C til +50°C condensation free
Sound Level: >85 dBA @ 10cm
Relay: 8A Ac1 (min 10V, Max 250V AC)
Output Voltage for Sensor: 13V DC



Date: 20-04-2023
Drawn by: DF
Document No.: 950-208610 CO₂_HighRangeAlarm_ES1180 ProductSheet
Rev.: 1.1
Manufactured by: **LS Control A/S**, Industrivej 12, DK-4160 Herlufmagle

www.lscontrol.dk tel. +45 5550 5550 lsc@lscontrol.dk



QR-code for download of manual

